

Oxford
Engineered
Materials Corporation

World sources, world class!

20950 Center Ridge Road
Cleveland, Ohio 44116-4307

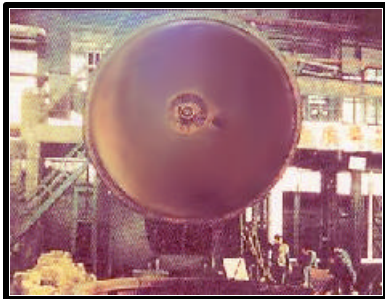
EQUIPMENT LIST, WELDING

Numerical Control cutting Machine: Cutting Scope: 7.5X16M, thickness: 3-300mm
Narrow Gap Submerged Arc Welder: MDG-1400, Capacity: ϕ 6000mm
Sandblasting Room: 6X6X15M, 30 tons, Sa3
Plate Bending Machine: 40X3500mm, 75X4000mm
Multi-Function Welder: ALBR-1200
Gas-Shielded Welding: Semi-automatic, Automatic
Argon-Welder: Semi-automatic, automatic
Position Changer: 20 tons, 100 tons
Farinfrared Partial heat Treatment Inverse Transformation Argon Welder: ZX7-400ST



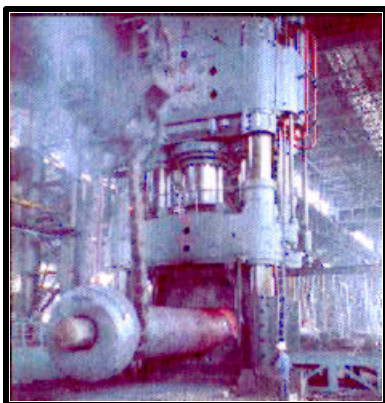
METALLURGICAL EQUIPMENT

Electric Arc Furnace: 40 tons
Basic Open Hearth Furnace: 60 tons, 2 units
Ladle Refining Furnace: 150 tons
Refining Ladle: 110 tons



CASTING EQUIPMENT

Vacuum Casting chambers: 100, 200, and 400 tons
Vacuum Pump System: 500 kg/H vacuum, 0.5
Casting Pit: 12X6X(minus 6)M
Hydro-peening Sand Room: 300 tons
Sandblasting Room: 200 tons
Foundry Crane: 320 tons X 28M



FORGING EQUIPMENT

Hydraulic Presses: 120 MN and 31.5 MN
Die Forging Hammers 100KN, 160 KN
Counterblow Hammer: 1MJ
Oil Press: 50 MN
Forging Crane: 315 tonsX30M